



ACCESSORY HANDBOOK

Backrest Pad Kit #6099-0023

Parts List

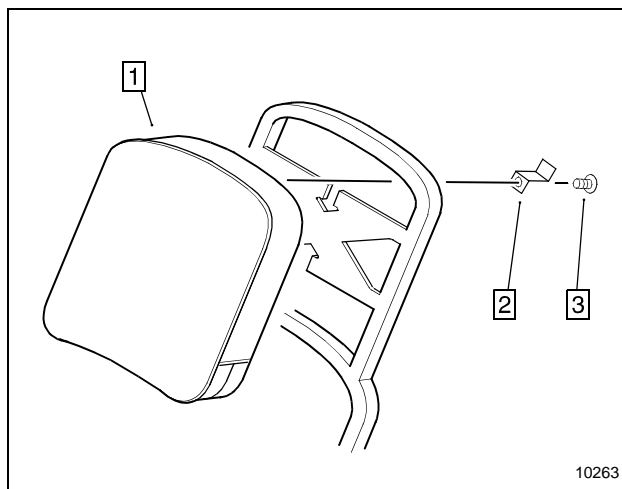


Figure 1

Item	Part No.	Description	Qty.
1.		Backrest Pad*	1
2.	7499-0008	Mounting Clip	3
3.	5199-0183	Screw - Hex. Button Hd.	3
* Not Sold Separately			

Installation Instructions

NOTICE

This kit is designed to be used with Sissy Bar Kit #6099-0022.

The "X" in the sissy bar is designed to provide additional support when using the sissy bar as a backrest, or with the optional backrest pad. When properly installed, the "X" should be flush with the forward surface of the sissy bar.

1. Install the backrest pad with the mounting clips and button hd. screws provided in this kit as shown (see Figure 1).

Backrest Pad Care

Clean the backrest pad with a vinyl upholstery cleaner to maintain its pliancy and appearance. You may use a vinyl protectant on the backrest pad as well. Always follow the manufacturer's instructions for proper application and use of vinyl cleaners or protectants. Avoid using any product that leaves the pad slippery once dry.



Slash-Cut Muffler Kit #6099-0020

Parts List

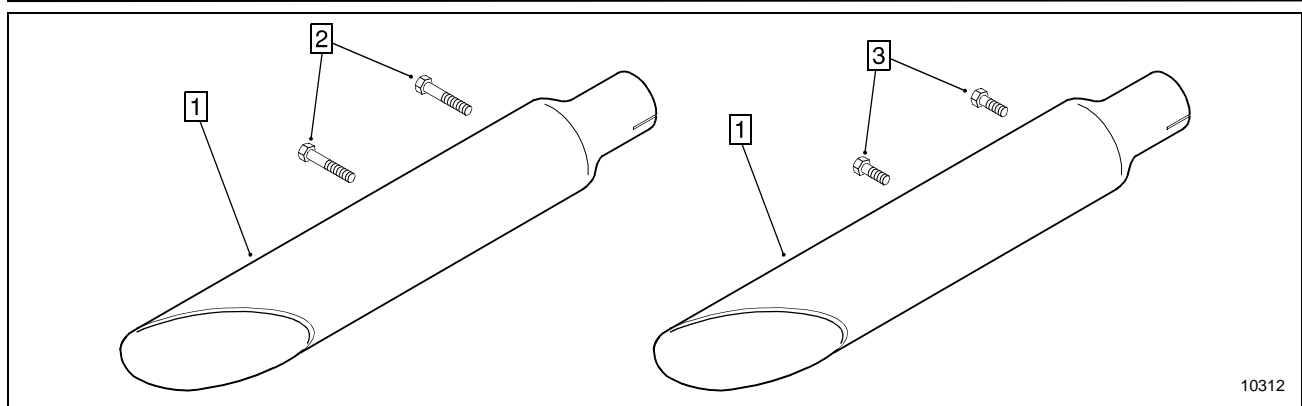


Figure 1

Item	Part No.	Description	Qty.	Item	Part No.	Description	Qty.
1.		Muffler - Slash-Cut*	2	3.	5199-0086	Screw - Front Muffler 1"	2
2.	5199-0090	Screw - Rear Muffler 2"	2				
* Not Sold Separately							

Installation Instructions

NOTICE

These mufflers do not conform to EPA noise emissions regulations and are intended for closed course use only.

⚠ WARNING

Under normal operating conditions, exhaust system components can be extremely hot. Allow engine to cool before installing the Slash-Cut mufflers.

1. Remove the existing rear cylinder and lower front cylinder exhaust system heat shields (see Figure 2).
2. Loosen both muffler clamps and slide them forward off of the existing mufflers.

3. Remove and discard the muffler mounting bolts, then slide the mufflers off of the header pipes.

NOTICE

These Slash-Cut mufflers are designed to use the existing muffler mounting bracket.

4. Slide the new mufflers onto the header pipes until their mounting holes align with the muffler mounting bracket. Start the muffler mounting bolts into each muffler. Use the shorter (1") screws provided with this kit for the front muffler, and the longer (2") screws provided with this kit for the rear muffler.
5. Slide each muffler clamp over the muffler and tighten the clamp.
6. Tighten the muffler mounting bolts.
Torque: 30 ft. lbs.

7. Reinstall the exhaust system heat shields.

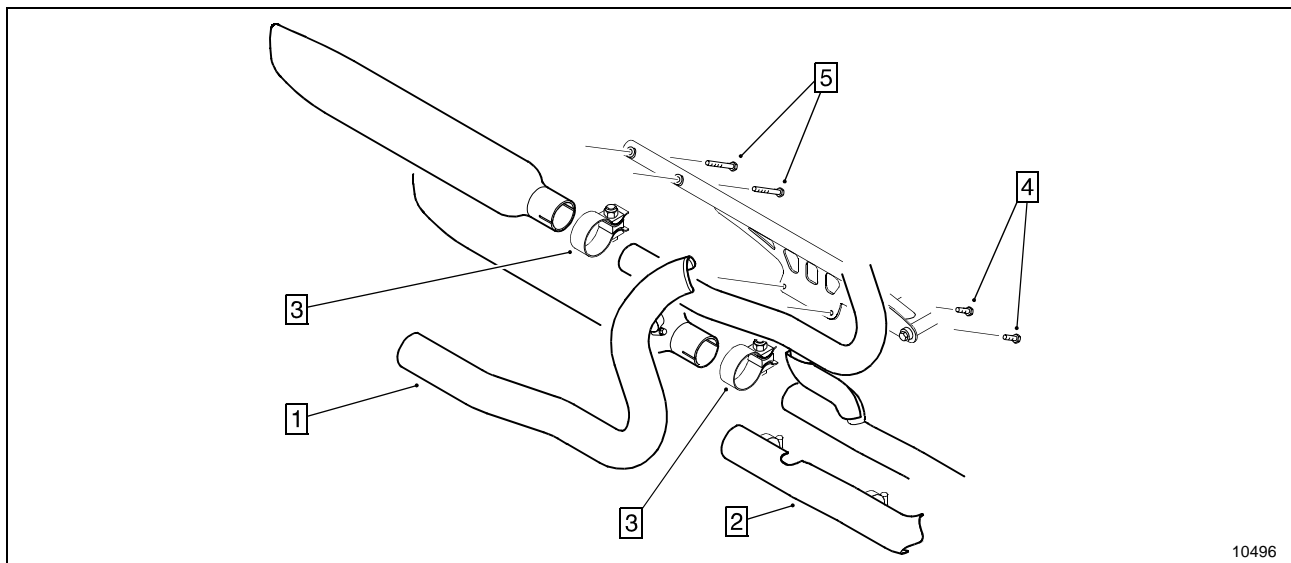


Figure 2

- | | |
|-------------------------------------|-------------------------------------|
| 1. Rear Cylinder Heat Shield | 4. Front Muffler Mounting Bolt (1") |
| 2. Lower Front Cylinder Heat Shield | 5. Rear Muffler Mounting Bolt (2") |
| 3. Muffler Clamp | |

8. Thoroughly clean both slash-cut mufflers with window cleaner or chrome polish before starting the motorcycle.

NOTICE

Oil, grease, and fingerprints can permanently damage chrome plated finishes when heated to extreme temperatures.



EXCELSIOR-HENDERSON MOTORCYCLE MANUFACTURING COMPANY

805 HANLON DRIVE · BELLE PLAINE, MINNESOTA 56011 · TELE: 612.873.7000/FAX: 612.873.7030 · www.excelsior-henderson.com

Excelsior-Henderson™, Super X™, Rider's Handbook™, and the X & Bar logo are registered trademarks of the Excelsior-Henderson Motorcycle Manufacturing Company. Loctite® is a registered trademark of the Loctite Corporation. Always ride safely, within the limits of the law, and your riding ability. Never ride under the influence of alcohol or drugs. Know your Excelsior-Henderson motorcycle and read your Rider's Handbook from cover to cover. We recommend you take a Motorcycle Safety Foundation Rider Education Course (for a course near you call 1.800.447.4700). We also recommend that you always wear a helmet, appropriate protective eyewear, and appropriate clothing, and that you insist your passenger does the same. However, we respect your right as an individual to make your own choice about the protective equipment you wear (within the limits of the law). Protect your privilege to ride by joining the American Motorcyclist Association.



Sissy Bar Kit #6099-0022

Parts List

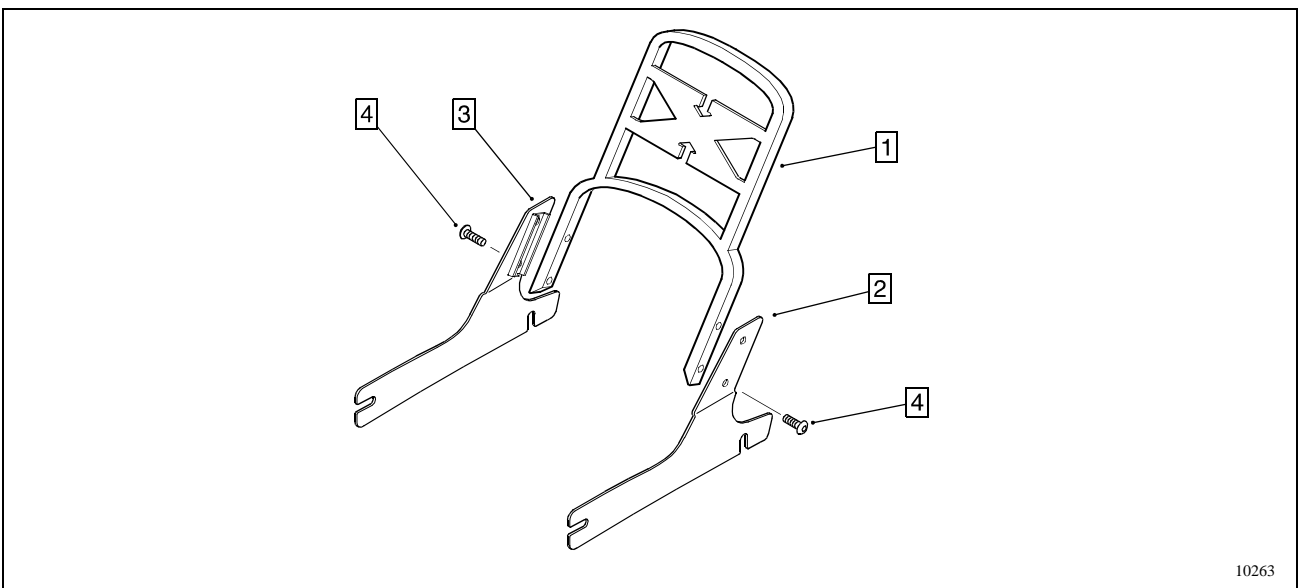


Figure 1

Item	Part No.	Description	Qty.	Item	Part No.	Description	Qty.
1.	7499-0004	Sissy Bar	1	3.	7499-0007	Plate - Side RH	1
2.	7499-0006	Plate - Side LH	1	4.	5199-0184	Screw - Hex. Button Hd.	4

Installation Instructions

Please read the Safety information on the following page before using your sissy bar.

1. Loosen, but do not remove, the rear fender mounting screws on each side of the motorcycle (see Figure 2).

NOTICE

Each sissy bar side plate must be installed between the rear fender and the rear fender bracket. Be careful not to damage painted or plated surfaces during installation or removal.

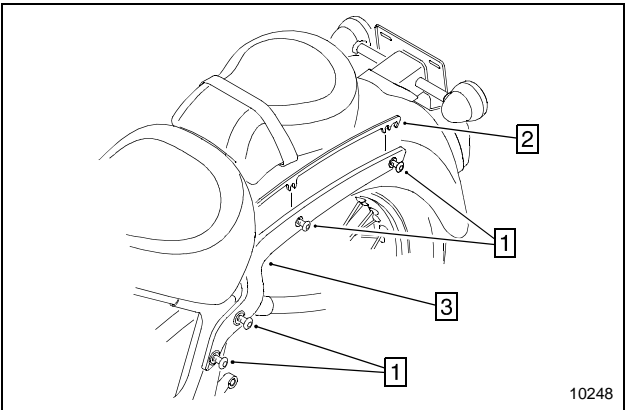


Figure 2

1. Rear Fender Mounting Screws (8)
2. Rear Fender Spacer
3. Rear Fender Support

2. If your motorcycle has rear fender spacers, remove them before installing the sissy bar kit. Replace the spacers when operating the motorcycle without the sissy bar kit.

NOTICE

To prevent interference with the reflector, it may be necessary to remove the rear mounting screw (see Figure 3).

3. Attach the left side plate to the motorcycle by gently spreading apart the rear fender and left fender bracket. Guide the front slot of the left side plate under the reflector and over the front mounting screw. Guide the rear slot of the side plate over the rear mounting screw (see Figure 3).

4. Repeat Step 3 for the right side plate.

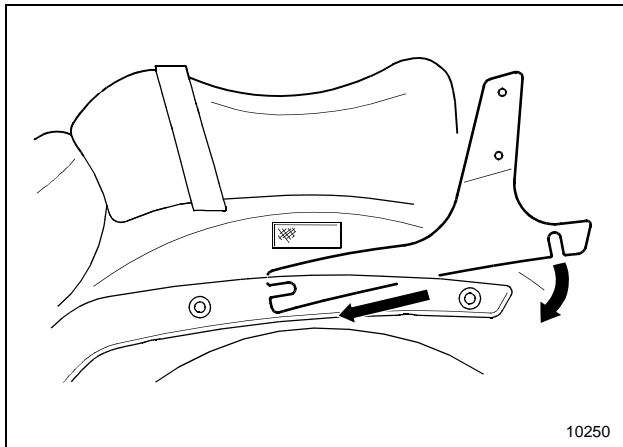


Figure 3

5. Position the sissy bar between the side plates and use the button hd. screws provided with this kit to attach the sissy bar to the side plates.

Torque: 15 ft. lbs

NOTICE

The "X" in the sissy bar is designed to provide additional support when using the sissy bar as a backrest, or with the optional backrest pad. When properly installed, the "X" should be flush with the forward surface of the sissy bar.

6. Tighten all rear fender mounting screws. Check fender alignment with the rear tire while tightening.

Torque: 35 ft. lbs.

7. Reverse this procedure to remove the sissy bar.

Safety

⚠ WARNING

Adding accessories and additional weight to the motorcycle can affect its stability, handling characteristics, and safe operating speed.

Be sure that the accessories and cargo are securely attached to the motorcycle before riding and whenever you take a break while riding. Accessories or cargo that shift while you are riding can create a sudden imbalance that can cause you to lose control of the motorcycle.



EXCELSIOR-HENDERSON MOTORCYCLE MANUFACTURING COMPANY

805 HANLON DRIVE · BELLE PLAINE, MINNESOTA 56011 · TELE: 612.873.7000/FAX: 612.873.7030 · www.excelsior-henderson.com
Excelsior-Henderson™, Super X™, Rider's Handbook™, and the X & Bar logo are registered trademarks of the Excelsior-Henderson Motorcycle Manufacturing Company. Loctite® is a registered trademark of the Loctite Corporation. Always ride safely, within the limits of the law, and your riding ability. Never ride under the influence of alcohol or drugs. Know your Excelsior-Henderson motorcycle and read your Rider's Handbook from cover to cover. We recommend you take a Motorcycle Safety Foundation Rider Education Course (for a course near you call 1.800.447.4700). We also recommend that you always wear a helmet, appropriate protective eyewear, and appropriate clothing, and that you insist your passenger does the same. However, we respect your right as an individual to make your own choice about the protective equipment you wear (within the limits of the law). Protect your privilege to ride by joining the American Motorcyclist Association.



ACCESSORY HANDBOOK

Short-Cut Exhaust Pipes Kit #6099-0021

Parts List

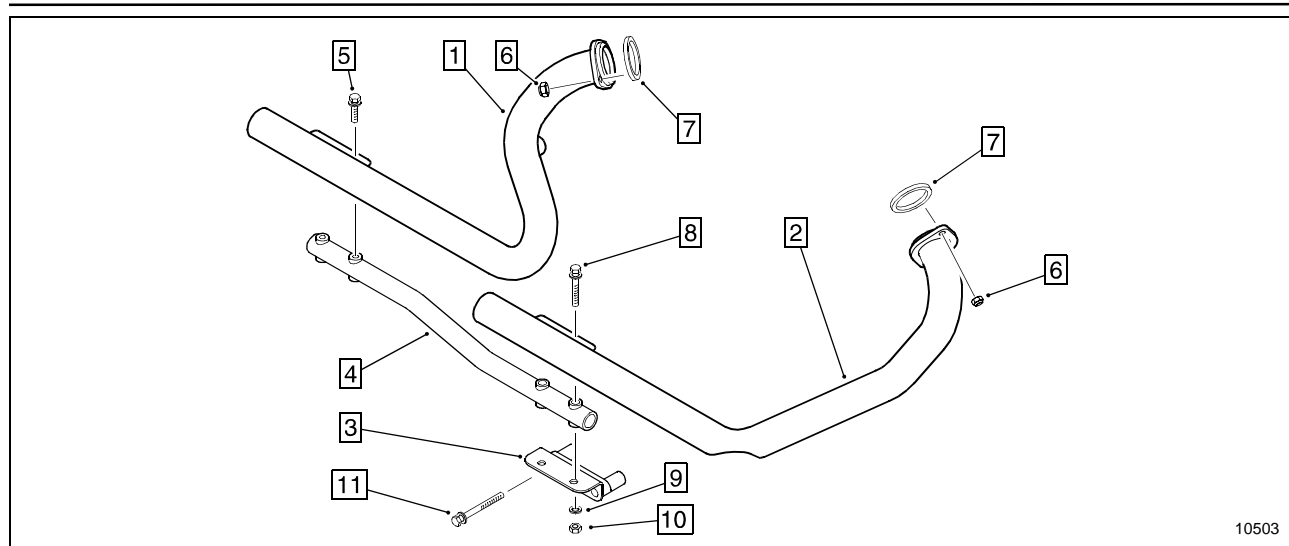


Figure 1

Item	Part No.	Description	Qty.	Item	Part No.	Description	Qty.
1.		Short-Cut Pipe - Rear*	1	7.	3199-0029	Gasket - Exhaust	2
2.		Short-Cut Pipe - Front*	1	8.	5199-0024	5/16-18 x 1-3/4 Hex. Hd. Screw	2
3.	7399-0014	Bracket - Front	1	9.	5299-0058	Washet - Flat	2
4.	7399-0018	Bracket - Rear	1	10.	5199-0508	5/16-18 Nut - Hex	2
5.	5199-0021	5/16-18 x 1 Hex. Hd. Screw	2	11.	5199-0102	3/8-16 x 2-1/4 Hex. Hd. Screw	2
6.	5199-0530	5/16-24 Nut - Hex	4				

* Not Sold Separately

Installation Instructions

NOTICE

These exhaust pipes do not conform to EPA noise emissions regulations and are intended for closed course use only.

⚠ WARNING

Under normal operating conditions, exhaust system components can be extremely hot. Allow engine to cool before installing the Short-Cut pipes.

1. Remove all of the existing exhaust system heat shields (see Figure 2).
2. Loosen both muffler clamps and slide them forward off of the existing mufflers.
3. Remove and discard the muffler mounting screws, then slide the mufflers and the muffler clamps off of the header pipes.
4. Disconnect the oxygen sensor wire from the rear header pipe.

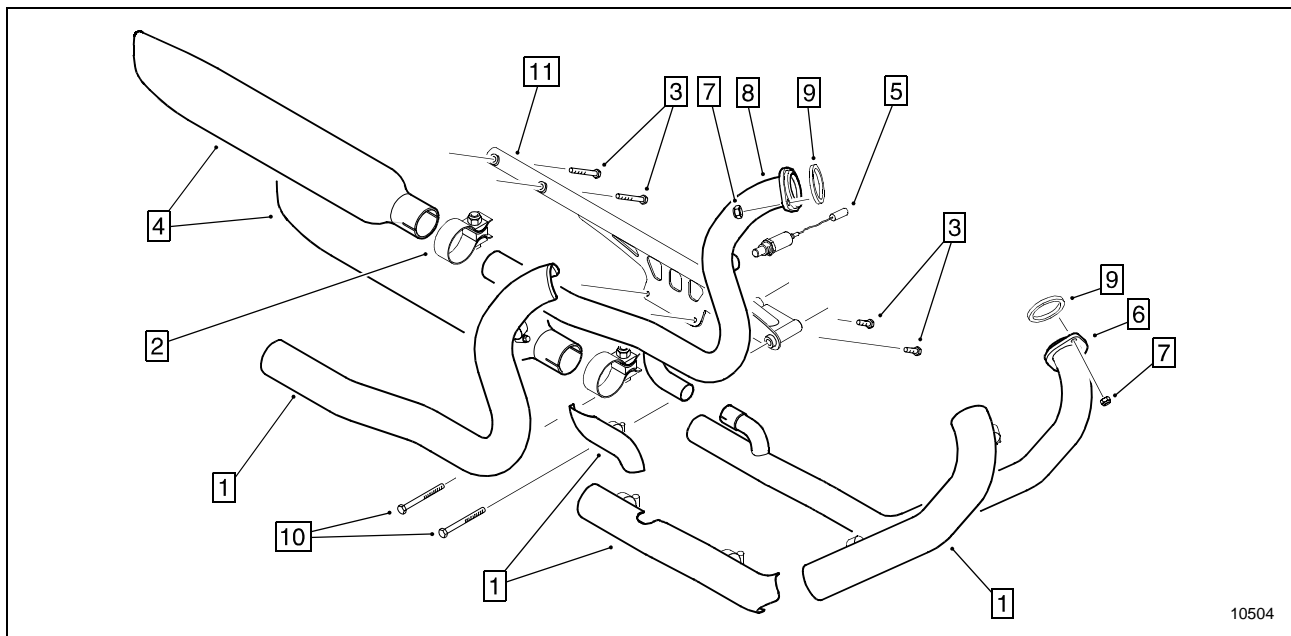


Figure 2

- | | |
|--------------------------------|-----------------------------|
| 1. Exhaust System Heat Shields | 7. Header Mounting Nuts |
| 2. Muffler Clamps | 8. Rear Header Pipe |
| 3. Muffler Mounting Screws | 9. Exhaust Header Gaskets |
| 4. Mufflers | 10. Mounting Bracket Screws |
| 5. Oxygen Sensor | 11. Mounting Bracket |
| 6. Front Header Pipe | |

5. Remove the front header mounting nuts and slide the front header pipe forward, out from the motorcycle.

6. Remove the rear header mounting nuts and the rear header pipe.

7. Remove the oxygen sensor from the rear header pipe, and remove both exhaust header gaskets.

8. Remove the stock exhaust system mounting bracket screws and the mounting bracket.

9. Install the new exhaust header gaskets provided with this kit into the exhaust ports of each cylinder head.

10. Install the front mounting bracket to the engine with the two 3/8-16 x 2-1/4 hex. hd. screws provided with this kit.

Torque: 30 ft-lbs.

11. Slide the front short-cut pipe into position on the front cylinder head and loosely install two of the new header mounting nuts.

12. Loosely attach the front short-cut pipe to the front and rear mounting brackets (see Figure 3).

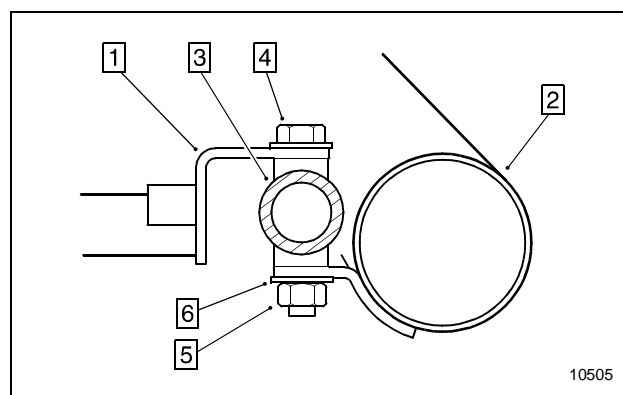


Figure 3

- | |
|---------------------------------------|
| 1. Front Mounting Bracket |
| 2. Front Short-Cut Pipe |
| 3. Rear Mounting Bracket |
| 4. 5/16-18 x 1-3/4 Hex. Hd. screw (2) |
| 5. 5/16-18 Hex. Nut (2) |
| 6. Washer - Flat (2) |

Short-Cut Exhaust Pipes Kit #6099-0021

13. Reinstall the oxygen sensor into the rear short-cut pipe.

Torque: 20 ft-lbs.

14. Slide the Rear short-cut pipe into position and loosely install two of the new header mounting nuts.

15. Attach the rear short-cut pipe above the rear mounting bracket (see Figure 4).

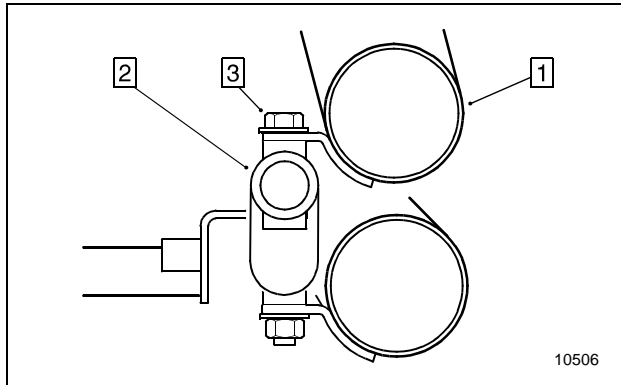


Figure 4

1. Rear Short-Cut Pipe
2. Rear Mounting Bracket
3. 5/16-18 x 1 Hex. Hd. Screw (2)

16. Reconnect the oxygen sensor wire to the rear header pipe.

17. Working from front to rear, tighten all exhaust system fasteners as follows:

- Front header mounting nuts
Torque: 20 ft. lbs
- Rear header mounting nuts
Torque: 20 ft. lbs
- Front pipe mounting bracket screws and nuts
Torque: 30 ft. lbs
- Rear pipe mounting bracket screws
Torque: 30 ft. lbs

18. Thoroughly clean both short-cut pipes with window cleaner or chrome polish before starting the motorcycle.

NOTICE

Oil, grease, and fingerprints can permanently damage chrome plated finishes when heated to extreme temperatures.



EXCELSIOR-HENDERSON MOTORCYCLE MANUFACTURING COMPANY

805 HANLON DRIVE · BELLE PLAINE, MINNESOTA 56011 · TELE: 612.873.7000/FAX: 612.873.7030 · www.excelsior-henderson.com

Excelsior-Henderson™, Super X™, Rider's Handbook™, and the X & Bar logo are registered trademarks of the Excelsior-Henderson Motorcycle Manufacturing Company. Loctite® is a registered trademark of the Loctite Corporation. Always ride safely, within the limits of the law, and your riding ability. Never ride under the influence of alcohol or drugs. Know your Excelsior-Henderson motorcycle and read your Rider's Handbook from cover to cover. We recommend you take a Motorcycle Safety Foundation Rider Education Course (for a course near you call 1.800.447.4700). We also recommend that you always wear a helmet, appropriate protective eyewear, and appropriate clothing, and that you insist your passenger does the same. However, we respect your right as an individual to make your own choice about the protective equipment you wear (within the limits of the law). Protect your privilege to ride by joining the American Motorcyclist Association.



ACCESSORY HANDBOOK

Saddlebag Kit #6099-0019

Parts List

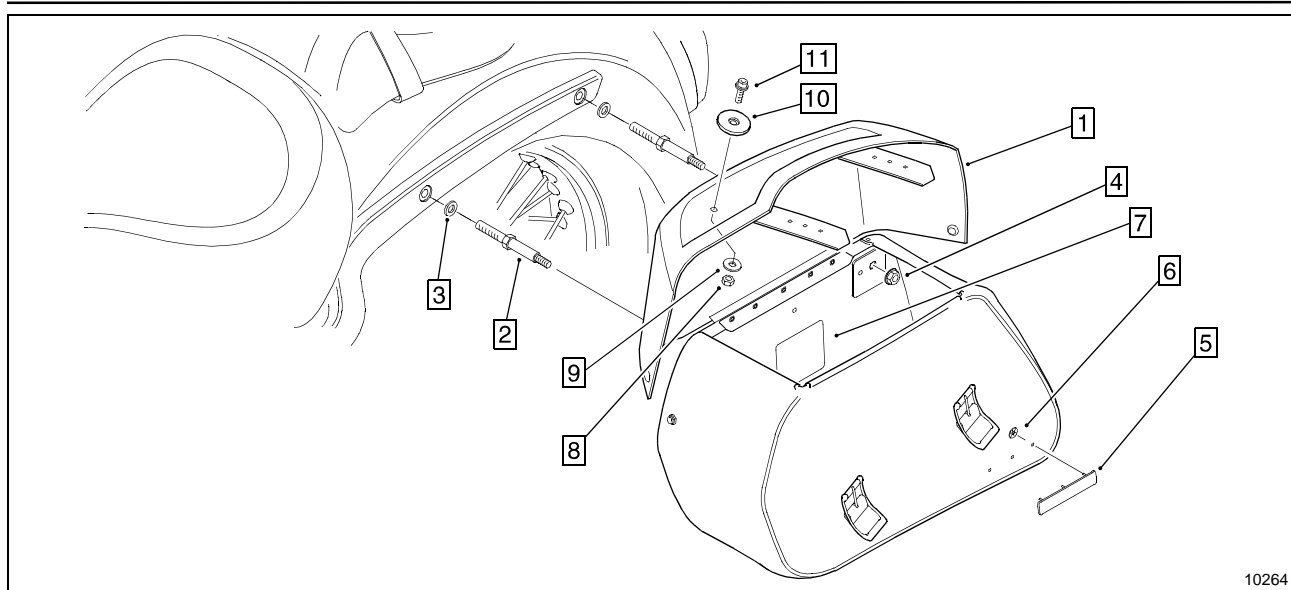


Figure 1

Item	Part No.	Description	Qty.	Item	Part No.	Description	Qty.
1.	7199-0001	Saddlebag Assembly - LH	1	6.	7199-0005	Nut - Push	6
*	7199-0002	Saddlebag Assembly - RH	1	7.	7199-0006	Decal - Warning	2
2.	7199-0003	Stud - Mounting	4	8.	5199-0494	Nut - Hex.	2
3.	5299-0106	Washer	4	9.	5299-0035	Washer - Flat	2
4.	5199-0495	Nut - Flange	4	10.	7499-0018	Side Reflector	2
5.	7199-0004	Plate - Logo	2	11.	5199-0598	Screw - Hex. Socket Hd.	2

*Not Illustrated

Installation Instructions

Please read the Safety information on page 2 of this document before using your saddlebags.

NOTICE

To prevent the rear fender from any unnecessary movement that could damage its painted surface, completely install or remove one saddlebag at a time.

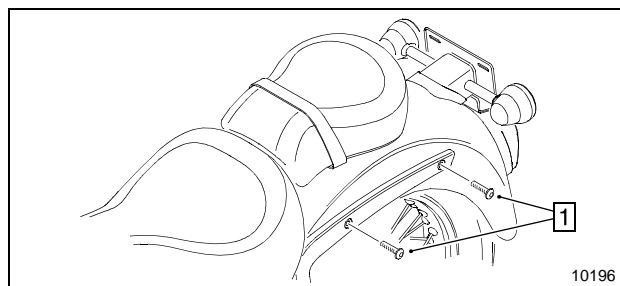


Figure 2

1. Mounting Screws (existing)

1. Remove the existing rear fender mounting screws (see Figure 2).

2. Apply a few drops of Loctite® 242 thread locker to the larger threads of the saddlebag mounting studs. Install the mounting studs and plain washers as shown (see Figure 1).

Torque: 35 ft. lbs.

3. Slide the saddlebag assembly onto the mounting studs. Install the flange lock nuts as shown (see Figure 1).

Torque: 20 ft. lbs

4. Repeat this procedure for the opposite saddlebag.

5. Punch or drill a small hole in the side flap of each lid and install the side reflectors provided with the kit (see Figure 1).

Safety

WARNING

Adding accessories and additional weight to the motorcycle can affect its stability, handling characteristics, and safe operating speed.

Be sure that the accessories and cargo are securely attached to the motorcycle before riding and whenever you take a break while riding. Accessories or cargo that shift while you are riding can create a sudden imbalance that can cause you to lose control.

To maintain stability and balance:

- Do not exceed 15 lbs. in each saddlebag.
- Load weight equally on both sides.
- Adjust tire pressure if necessary. See Rider's Handbook.
- Do not exceed gross axle or vehicle weight. See Rider's Handbook and Certification Label on headstock.

Saddlebag Care

Natural leather has "character." Each piece used in the construction of these saddlebags is unique, and will settle into its own distinct form over time and miles. Mature leather is "one-of-a-kind", and if properly cared for, only gets better with age.

Caring for natural leather is similar to caring for your own skin. To prevent leather from becoming hard and dry, occasionally apply a leather conditioner. A good quality leather conditioner replaces the natural oils lost by repeated exposure to sun, wind, and rain. Leather subject to drier climates will require more frequent conditioning.

To retain the beauty and character of your leather saddlebags, please follow these steps.

1. Vacuum or blow any loose dust or dirt from the saddlebag.
2. Use a good quality saddle soap and a sponge or soft cloth to clean the saddlebag. Always follow the manufacturer's directions. Rinse the saddlebag with a clean wet cloth or sponge.
3. Once the leather is dry, treat it with a good quality leather conditioner. Always follow the manufacturer's directions.
4. Allow the conditioner to dry, and wipe off any excess before using the saddlebag.



EXCELSIOR-HENDERSON MOTORCYCLE MANUFACTURING COMPANY

805 HANLON DRIVE · BELLE PLAINE, MINNESOTA 56011 · TELE: 612.873.7000/FAX: 612.873.7030 · www.excelsior-henderson.com

Excelsior-Henderson™, Super X™, Rider's Handbook™, and the X & Bar logo are registered trademarks of the Excelsior-Henderson Motorcycle Manufacturing Company. Loctite® is a registered trademark of the Loctite Corporation. Always ride safely, within the limits of the law, and your riding ability. Never ride under the influence of alcohol or drugs. Know your Excelsior-Henderson motorcycle and read your Rider's Handbook from cover to cover. We recommend you take a Motorcycle Safety Foundation Rider Education Course (for a course near you call 1.800.447.4700). We also recommend that you always wear a helmet, appropriate protective eyewear, and appropriate clothing, and that you insist your passenger does the same. However, we respect your right as an individual to make your own choice about the protective equipment you wear (within the limits of the law). Protect your privilege to ride by joining the American Motorcyclist Association.



SERVICE/PARTS KIT

Power Relay Update Kit #6099-0034

For 1999 Model HCX #00001 through 00848

Parts List

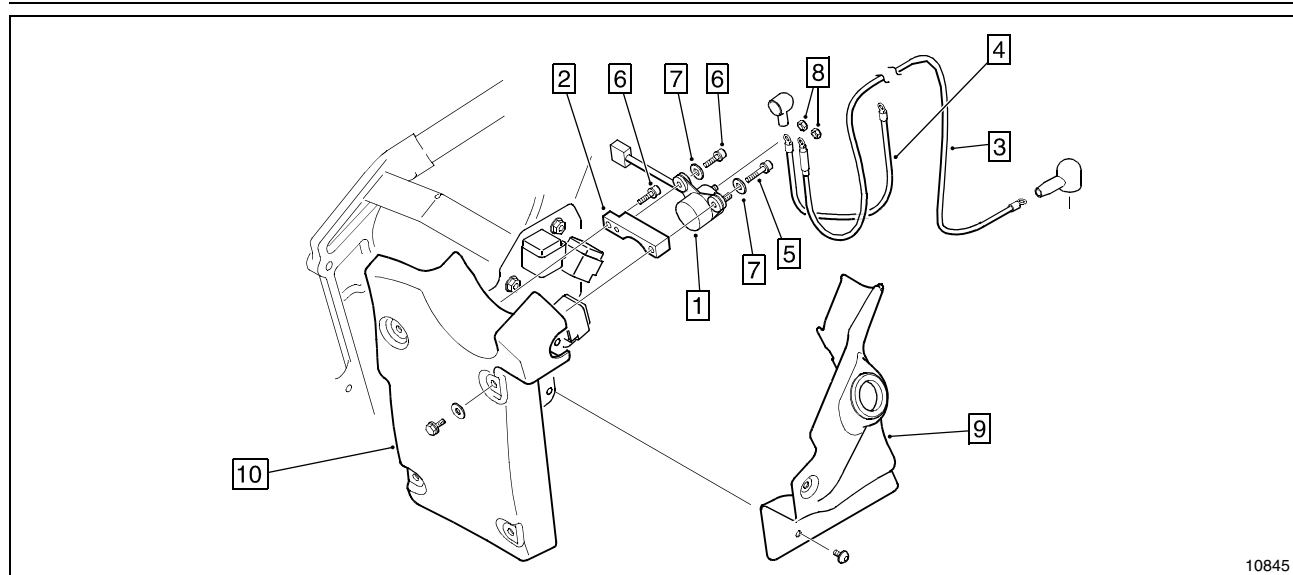


Figure 1

Item	Part No.	Description	Qty.	Item	Part No.	Description	Qty.
1.	2699-0196	Relay - Power	1	6.	5199-0130	Screw - Hex. Socket Hd. (1/4-20 x 1)	2
2.	2699-0195A	Adapter - Relay	1	7.	5199-0124	Washer - Flat (1/4)	2
3.	2699-0203	Wire - Relay to Starter	1	8.	5199-0644	Nut - Hex. (M6)	2
4.	2699-0202	Wire - Relay to Circuit Breaker	1	9.		Electronics Cover*	
5.	5199-0132	Screw - Hex. Socket Hd. (1/4-20 x 1-1/2)	1	10.		ECM Cover*	

* Shown for reference only

Installation Instructions

1. Remove the seat(s), the battery cover strap, and the battery cover. Disconnect the negative cable from the battery.

2. Remove the rear exhaust pipe heat shield. Pull the oxygen sensor wire from under the electronics cover and disconnect the oxygen sensor wire.

3. Remove the rear muffler mounting bolts and the rear header mounting nuts. Remove the rear exhaust pipe assembly.

4. Remove the output sprocket cover.

5. Remove the dipstick and the electronics cover (see Figure 1). Temporarily reinstall the dipstick to prevent debris from entering the engine oil.

6. Remove and discard the wire that connects the existing power relay to the circuit breaker.
7. Disconnect both ends of the existing power relay to starter wire.
8. Disconnect the existing power relay from the main wire harness. Remove and discard the existing power relay.
9. Use one of the 1/4-20 x 1 socket hd. screws provided to attach the relay adapter to the electronics cover support (see Figure 1).
10. Install the new power relay to the relay adapter as shown, and connect it to the main wire harness (see Figure 1).
11. Safely elevate the rear of the motorcycle 5-6" and remove the ECM cover (in front of the rear wheel).

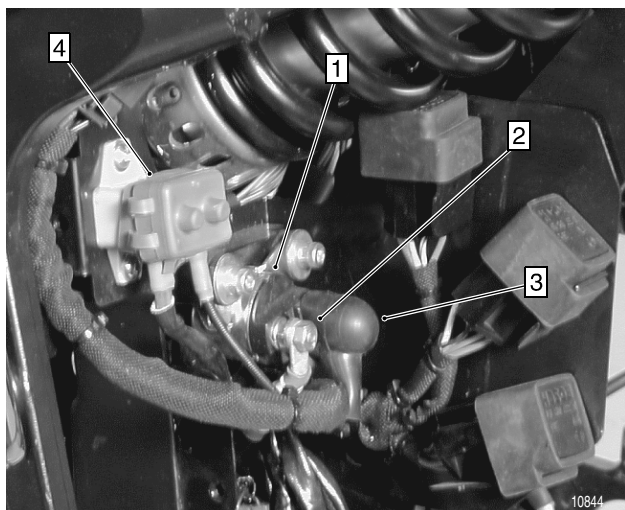


Figure 2

1. Power Relay
2. Relay to Starter Wire
3. Relay to Circuit Breaker Wire
4. Circuit Breaker

12. Note the location, remove, and discard the existing power relay to starter wire. Install the relay to starter wire provided in exactly the same location as the wire you just removed. Attach the wire to the starter terminal post and to the new power relay (see Figure 2).

13. Replace any cable ties you may have removed during the previous procedure. Reinstall the ECM cover and lower the rear of the motorcycle.

14. Install the relay to circuit breaker wire provided (see Figure 2).

Notice

The starter terminal post and the inner terminal post of the power relay should have non-conductive boots installed. Use existing boots or those provided with this kit.

15. Reinstall the electronics cover and the dipstick.

Torque: 7 ft. lbs

16. Reinstall the output sprocket cover.

Torque: 7 ft. lbs

17. Reinstall the rear exhaust pipe assembly and reconnect the oxygen sensor wire.

Torque: Header Mounting Nut = 20 ft. lbs

Torque: Muffler Mounting Bolt = 30 ft lbs

18. Reconnect the negative battery cable and reinstall the seat.



EXCELSIOR-HENDERSON MOTORCYCLE MANUFACTURING COMPANY

805 HANLON DRIVE · BELLE PLAINE, MINNESOTA 56011 · TELE: 612.873.7000/FAX: 612.873.7030 · www.excelsior-henderson.com
Excelsior-Henderson™, Super X™, Rider's Handbook™, and the X & Bar logo are registered trademarks of the Excelsior-Henderson Motorcycle Manufacturing Company. Loctite® is a registered trademark of the Loctite Corporation. Always ride safely, within the limits of the law, and your riding ability. Never ride under the influence of alcohol or drugs. Know your Excelsior-Henderson motorcycle and read your Rider's Handbook from cover to cover. We recommend you take a Motorcycle Safety Foundation Rider Education Course (for a course near you call 1.800.447.4700). We also recommend that you always wear a helmet, appropriate protective eyewear, and appropriate clothing, and that you insist your passenger does the same. However, we respect your right as an individual to make your own choice about the protective equipment you wear (within the limits of the law). Protect your privilege to ride by joining the American Motorcyclist Association.



Oil Cooler Kit #6099-0037

Parts List

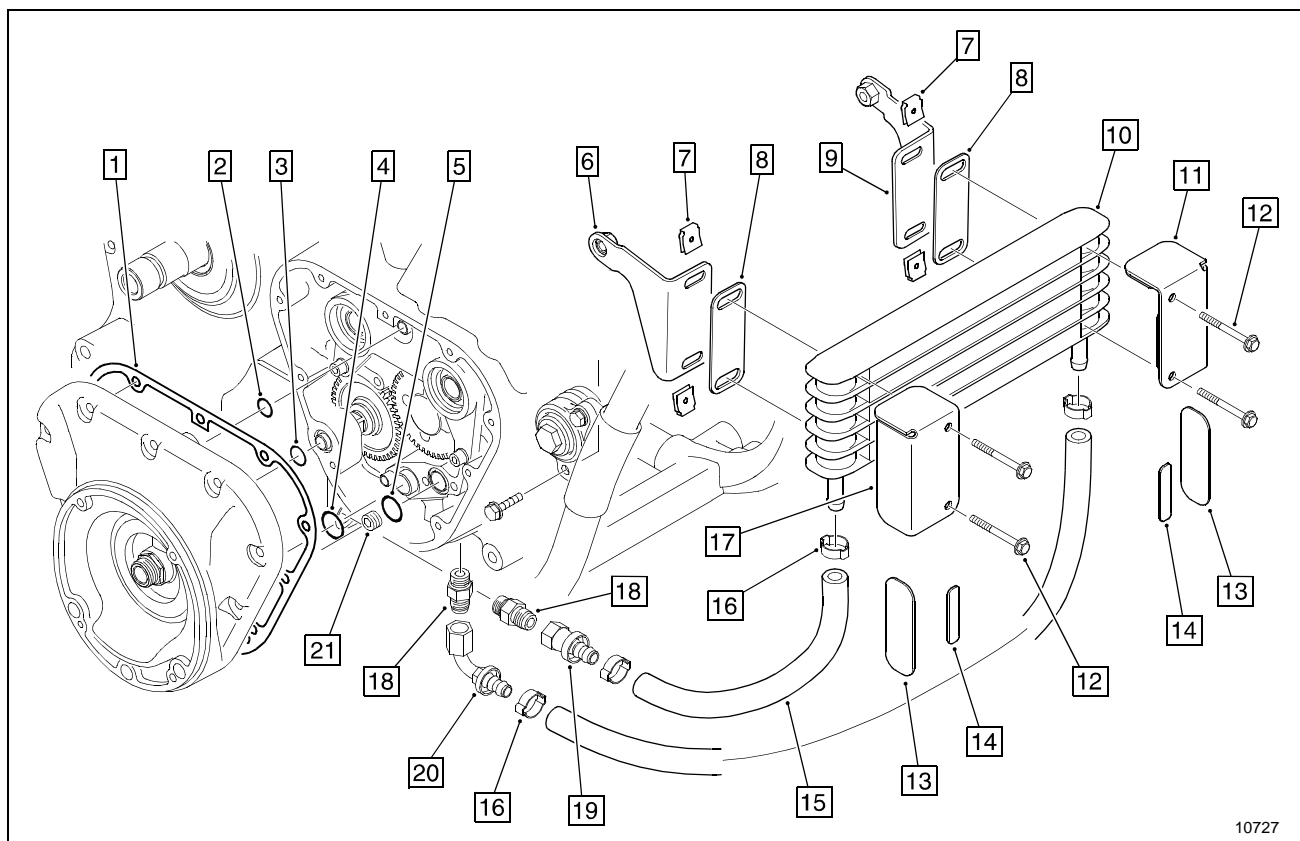


Figure 1

Item	Part No.	Description	Qty.	Item	Part No.	Description	Qty.
1.	3599-0053	Gasket - Timing Cover	1	12.	5199-0798	Screw - Hex Hd.	4
2.	6199-0026	Seal - O-ring	1	13.	3599-0110	Pad - Cover Side	2
3.	6199-0017	Seal - O-ring	1	14.	3599-0122	Pad - Cover Front	2
4.	6199-0034	Seal - O-ring	1	15.	3599-0114	Hose - 28"	1
5.	6199-0030	Seal - O-ring	1	16.	5499-0031	Clamp - Hose	4
6.	3599-0100	Bracket - Cooler RH	1	17.	3599-0108	Cover - Cooler RH	1
7.	3599-0103	U-nut	4	18.	6399-0003	Fitting - Adapter	2
8.	3599-0102	Pad - Bracket	2	19.	6399-0002	Fitting - Swivel Straight	1
9.	3599-0105	Bracket - Cooler LH	1	20.	6399-0001	Fitting - Swivel Elbow 90°	1
10.	3599-0089	Cooler - Oil	1	21.	6499-0059	Plug - Pipe	1
11.	3599-0112	Cover - Cooler LH	1				

Installation Instructions

Notice

Obtain a new oil filter and 4 quarts of genuine Excelsior-Henderson motor oil before installing the oil cooler kit.

Special Tools:

- 3/16" Extra Long Ball Hex Driver
- Otiger Clamp Pliers

1. Drain the engine oil as described in the Super X Rider's Handbook™.
2. Before installing a new oil filter, carefully remove the timing cover (see Figure 2). Remove

and discard the timing cover gasket, O-ring, and idler shaft O-ring. Clean any remaining gasket material from the timing cover and the engine case.

Notice

Use a flat blade screwdriver to prevent pulling the idler shaft from the timing chest when removing the timing cover.

3. Remove the scavenge pump (see Figure 2). Remove and discard the input and output port O-rings.

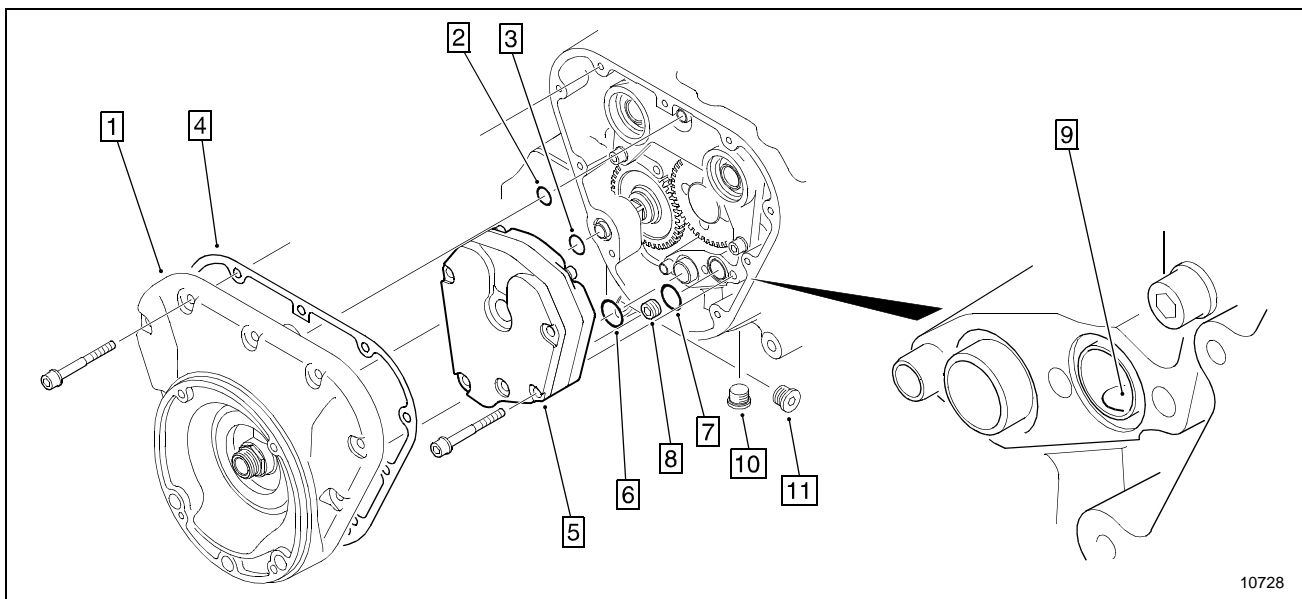


Figure 2

- | | |
|------------------------|-----------------------------|
| 1. Timing Cover | 7. Output Port O-ring |
| 2. Timing Cover O-ring | 8. Plug - Pipe |
| 3. Idler Shaft O-ring | 9. Output Down-port |
| 4. Gasket | 10. Scavenge Pump Case Plug |
| 5. Scavenge Pump | 11. Pressure Pump Case Plug |
| 6. Input Port O-ring | |

4. Install the pipe plug provided with the kit in the scavenge pump output port as shown (see Figure 2).

Notice

Make sure the plug completely clears the output down-port (see Figure 2).

5. Remove the scavenge pump case plug and the pressure pump case plug (see Figure 2). Install the adapter fittings provided.

Torque: 18 ft-lbs

⚠ Caution

If the oil cooler is removed from the motorcycle; the engine fittings must be replaced with the original plugs, and the internal pipe plug must be removed before starting the engine.

6. Install the new scavenge pump input and output port O-rings provided. Install the scavenge pump.

Torque: 8 ft-lbs

7. Install the new idler shaft O-ring, timing cover O-ring, and cover gasket provided. Install the timing cover.

Torque: 8 ft-lbs

8. Apply a thin film of clean engine oil to the new oil filter gasket. Screw the new filter on until the gasket contacts the filter mounting plate. Tighten the filter *by hand* an additional 1/2 to 3/4 turn.

9. Attach the cover pads to the right and left side oil cooler covers as shown (see Figure 3).

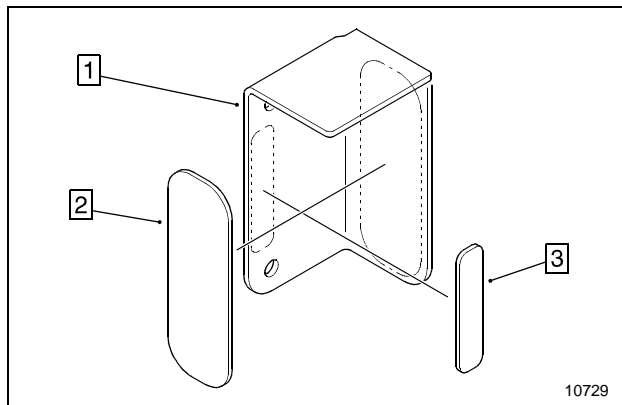


Figure 3

1. Oil Cooler Cover (right side shown)
2. Pad - Cover Side
3. Pad - Cover Front

10. Install the U-nuts and the bracket pads to the right and left side oil cooler brackets as shown (see Figure 4). Make sure the U-nuts lay underneath the pad.

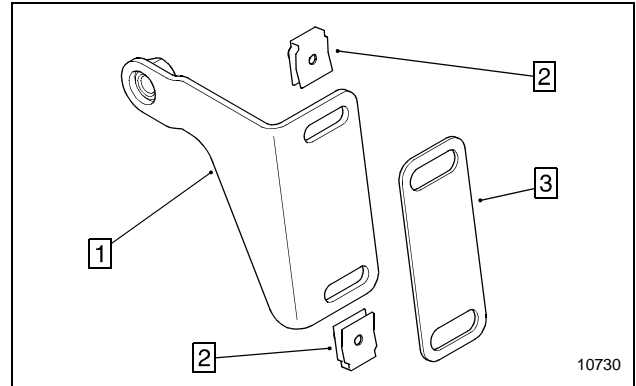


Figure 4

1. Oil Cooler Bracket (right side shown)
2. U-nut
3. Pad - Bracket

11. Cut a 14" length from the hose provided. Fit one end of the hose over the elbow swivel fitting. Slide two hose clamps onto the hose and fit the other end over the left side oil cooler fitting (see Figure 1). Crimp the hose clamps over the fittings.

12. Cut a 13 1/2" length from the hose provided. Fit one end of the hose over the straight swivel fitting. Slide two hose clamps onto the hose and fit the other end over the right side oil cooler fitting (see Figure 1). Crimp the hose clamps over the fittings.

13. Loosen the lower front engine mount flange screws and remove the lock washers and hex nuts. Install the right and left side oil cooler brackets (see Figure 1). Tighten the screws finger tight.

14. Hold the oil cooler and the oil cooler covers in position and install the four hex hd. screws provided.

15. Adjust the angle of the oil cooler to mirror the frame down-tubes and tighten the lower front engine mount flange screws.

Torque: 20 ft-lbs

16. Install the straight swivel fitting to the pressure pump case adapter. Install the elbow swivel fitting to the scavenge pump case adapter (see Figure 1).

Torque: 18 ft-lbs

17. Fill the crankcase with 3-3/4 quarts of genuine Excelsior-Henderson motor oil.

18. Start and run the engine until it reaches normal operating temperature.

⚠ Caution

After an oil change, the low oil pressure indicator remains illuminated longer than usual before going out. Revving the engine while the low oil pressure indicator is illuminated can damage the engine.

19. Stop the engine and make sure there are no leaks around the drain plugs, engine fittings, oil cooler hose connections, and oil filter. Reinstall the oil filter cover.

20. Check the oil level using the recommended procedure and adjust if needed (see the Super X Rider's Handbook).



EXCELSIOR-HENDERSON MOTORCYCLE MANUFACTURING COMPANY

805 HANLON DRIVE · BELLE PLAINE, MINNESOTA 56011 · TELE: 612.873.7000/FAX: 612.873.7030 · www.excelsior-henderson.com
Excelsior-Henderson™, Super X™, Rider's Handbook™, and the X & Bar logo are registered trademarks of the Excelsior-Henderson Motorcycle Manufacturing Company. Loctite® is a registered trademark of the Loctite Corporation. Always ride safely, within the limits of the law, and your riding ability. Never ride under the influence of alcohol or drugs. Know your Excelsior-Henderson motorcycle and read your Rider's Handbook from cover to cover. We recommend you take a Motorcycle Safety Foundation Rider Education Course (for a course near you call 1.800.447.4700). We also recommend that you always wear a helmet, appropriate protective eyewear, and appropriate clothing, and that you insist your passenger does the same. However, we respect your right as an individual to make your own choice about the protective equipment you wear (within the limits of the law). Protect your privilege to ride by joining the American Motorcyclist Association.



ACCESSORY HANDBOOK

Luggage Carrier Kit #6099-0024

Parts List

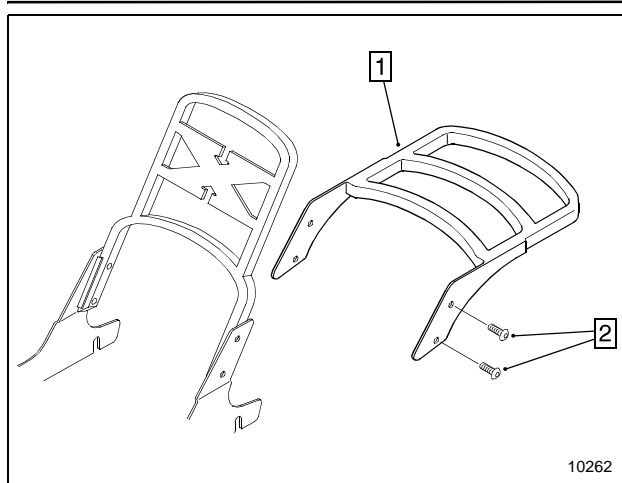


Figure 1

Item	Part No.	Description	Qty.
1.		Luggage Carrier*	1
2.	5199-0630	Screw - Button Hd.	4
* Not Sold Separately			

Installation Instructions

Please read the Safety information before using your luggage carrier.

NOTICE

This kit is designed to be used with Sissy Bar Kit #6099-0022.

The luggage carrier must be installed over the sissy bar side plates. Be careful not to damage painted or plated surfaces during installation or removal.

1. Install the luggage carrier with the fasteners provided as shown (see Figure 1).

Torque: 15 ft. lbs.

Safety

⚠ WARNING

Adding accessories and additional weight to the motorcycle can affect its stability, handling characteristics, and safe operating speed.

Be sure that the accessories and cargo are securely attached to the motorcycle before riding and whenever you take a break while riding. Accessories or cargo that shift while you are riding can create a sudden imbalance that can cause you to lose control.

To maintain stability and balance:

- The maximum load is 5 lbs. See Rider's Handbook.
- Keep cargo and accessory weight to a minimum, and as close to the motorcycle as possible, to minimize a change in the motorcycle's center of gravity. Distribute weight evenly on both sides.



Highway Bar Kit #6099-0027

Parts List

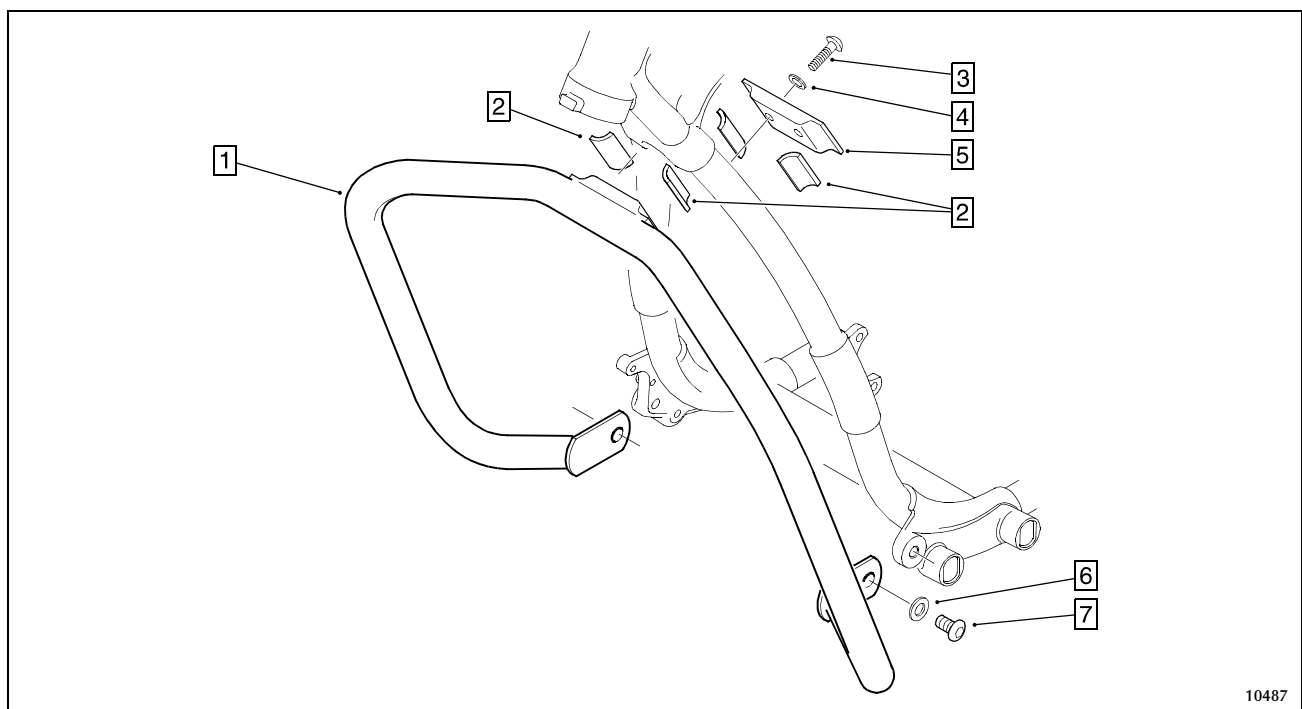


Figure 1

Item	Part No.	Description	Qty.	Item	Part No.	Description	Qty.
1.		Highway Bar*	1	5.	7399-0013	Bracket - Bar	1
2.	7399-0012	Pad - Friction (bulk)	1	6.	5299-0042	Washer	2
3.	5199-0633	Screw - Hex. Button Hd.	2	7.	5199-0466	Screw - Hex. Button Hd.	2
4.	5299-0058	Washer	2				
* Not Sold Separately							

Installation Instructions

Please read the Safety information on the following page before using your highway bar.

NOTICE

The working clearance between the front fender and the motorcycle frame is small, be careful not to damage painted or plated surfaced during installation or removal.

1. Cut the friction pad provided with this kit into four equal pieces (1-1/2" x 1-1/4" each). Remove the adhesive backing and attach two pieces to the highway bar bracket, and two pieces to the highway bar (see Figure 1).

2. Place the highway bar between the motorcycle frame and the front fender. Align the lower mounting tabs of the highway bar with the mounting holes on the motorcycle frame and



install one washer and button hd. screw on each side finger tight (see Figure 1).

3. Raise the top of the highway bar until the friction pads contact the motorcycle frame

squarely. Use the remaining washer and button hd. screw to install the bar bracket (see Figure 1).

Torque: 17 ft. lbs.

4. Tighten both lower mounting screws.

Torque: 45 ft. lbs.

Safety

WARNING

This highway bar will not protect you from injury.

WARNING

Adding accessories and additional weight to the motorcycle can affect its stability, handling characteristics, and safe operating speed.

Be sure that the highway bar is securely attached to the motorcycle before riding and whenever you take a break while riding. If the highway bar shifts while you are riding, it can create a sudden imbalance that can cause you to lose control.

To maintain stability and balance:

- With the exception of highway pegs, do not attach additional weight to the highway bar.



EXCELSIOR-HENDERSON MOTORCYCLE MANUFACTURING COMPANY

805 HANLON DRIVE · BELLE PLAINE, MINNESOTA 56011 · TELE: 612.873.7000/FAX: 612.873.7030 · www.excelsior-henderson.com

Excelsior-Henderson™, Super X™, Rider's Handbook™, and the X & Bar logo are registered trademarks of the Excelsior-Henderson Motorcycle Manufacturing Company. Loctite® is a registered trademark of the Loctite Corporation. Always ride safely, within the limits of the law, and your riding ability. Never ride under the influence of alcohol or drugs. Know your Excelsior-Henderson motorcycle and read your Rider's Handbook from cover to cover. We recommend you take a Motorcycle Safety Foundation Rider Education Course (for a course near you call 1.800.447.4700). We also recommend that you always wear a helmet, appropriate protective eyewear, and appropriate clothing, and that you insist your passenger does the same. However, we respect your right as an individual to make your own choice about the protective equipment you wear (within the limits of the law). Protect your privilege to ride by joining the American Motorcyclist Association.



Driving Lamp Kit #6099-0026

Parts List

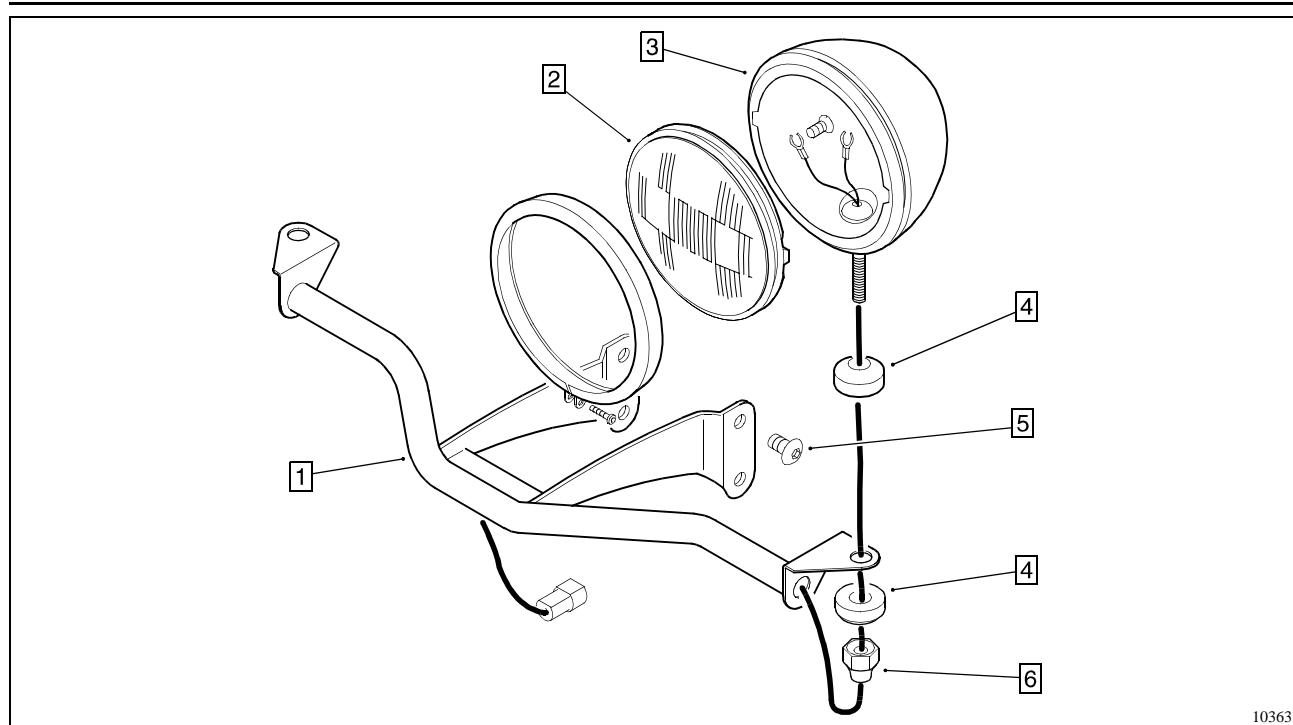


Figure 1

Item	Part No.	Description	Qty.	Item	Part No.	Description	Qty.
1.	7499-0005	Lamp Bar	1	4.	7499-0014	Spacer - Convex	4
2.	7499-0011	Bulb	2	5.	5199-0634	Screw - Hex. Button Hd.	4
3.	7499-0012	Lamp Assy. (with switch)	1	6.	7499-0016	Nut - Post	2
*	7499-0013	Lamp Assy. (without switch)	1				
* Not illustrated							

Installation Instructions

Please read the Safety information found on page 3 before using your driving lamps.

NOTICE

To connect the driving lamp to the power source provided, the fuel tank must be removed. It is not necessary to drain the fuel tank prior to removal. For easier tank removal, the fuel tank should be almost empty. The fuel tank may also be pumped empty (see the *Super X Service Handbook*).

1. Remove the hole plugs from the lower two mounting holes on each side of the rigid fork. If necessary, clean any paint from the mounting holes with a 5/16"-18 tap.

2. Attach the driving lamp bar brackets to the rigid fork with the 4 hex. button hd. screws provided as shown (see Figure 2).

Torque: 17 ft. lbs.

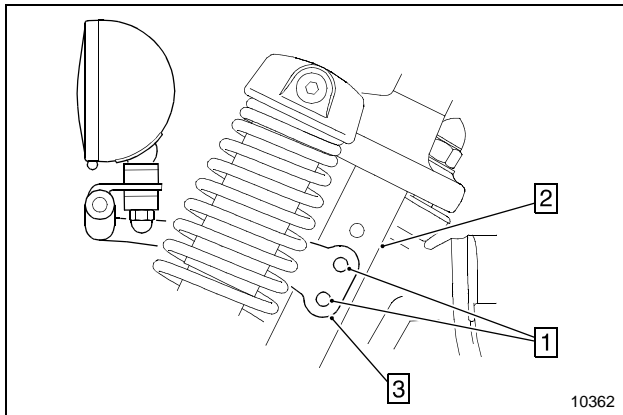


Figure 2

1. Mounting holes
2. Rigid fork
3. Bracket

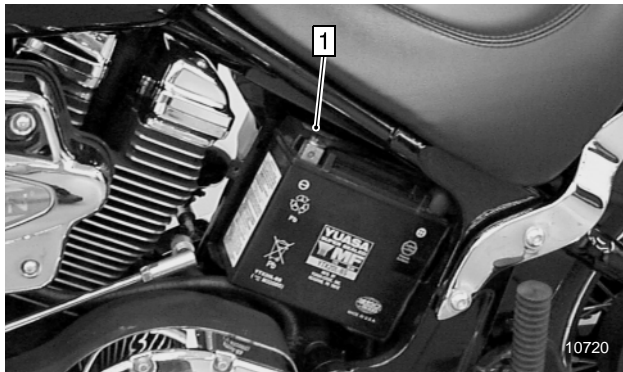


Figure 3

1. Battery negative cable
3. Remove the battery cover strap and the battery cover. Disconnect the negative cable from the battery (see Figure 3).
4. Remove the acorn bolts from the instrument pod (see Figure 4). Lift the instrument pod and disconnect the following items from the main wiring harness:
- Instrument pod
 - Fuel level sending unit
 - Fuel pump

⚠ WARNING

Gasoline is highly flammable and can be explosive in certain conditions. Follow safe gasoline handling practices whenever working with or near gasoline.

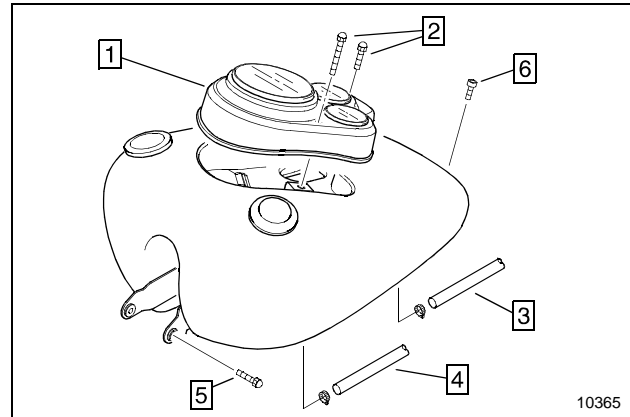


Figure 4

1. Instrument pod
2. Acorn bolts (2)
3. Vent hose
4. Fuel Hose
5. Front mounting bolts (2)
6. Rear mounting bolt

5. Disconnect the vent hose from the fuel tank. Disconnect the fuel hose at the fuel pump (see Figure 4).

NOTICE

Contents of the fuel tank will not drain when the fuel hose is disconnected.

6. Remove the front and rear fuel tank mounting bolts (see Figure 4). Lift the fuel tank up off of the motorcycle and move it to a safe location.
7. Route the driving lamp wires back to the main harness and connect it to the main wiring harness at connector P38 (gray). Use the wire ties provided with the kit to safely anchor the driving lamp wire.
8. Install the fuel tank by following steps 3-6 in reverse order.

9. Aim the driving lamps. Each lamp should shine straight ahead or slightly to the right of the motorcycle. The top of the lamp beam should be just below the center of the lamp at a distance of 25' (see Figure 5).

To correctly aim the driving lamps:

- Stand the motorcycle in an upright position.
- Turn the motorcycle main switch to On.
- Turn the driving lamp switch to On.
- Loosen each driving lamp post nut and aim the driving lamp beam as shown.
- Tighten each post nut and check each lamp for correct aim.

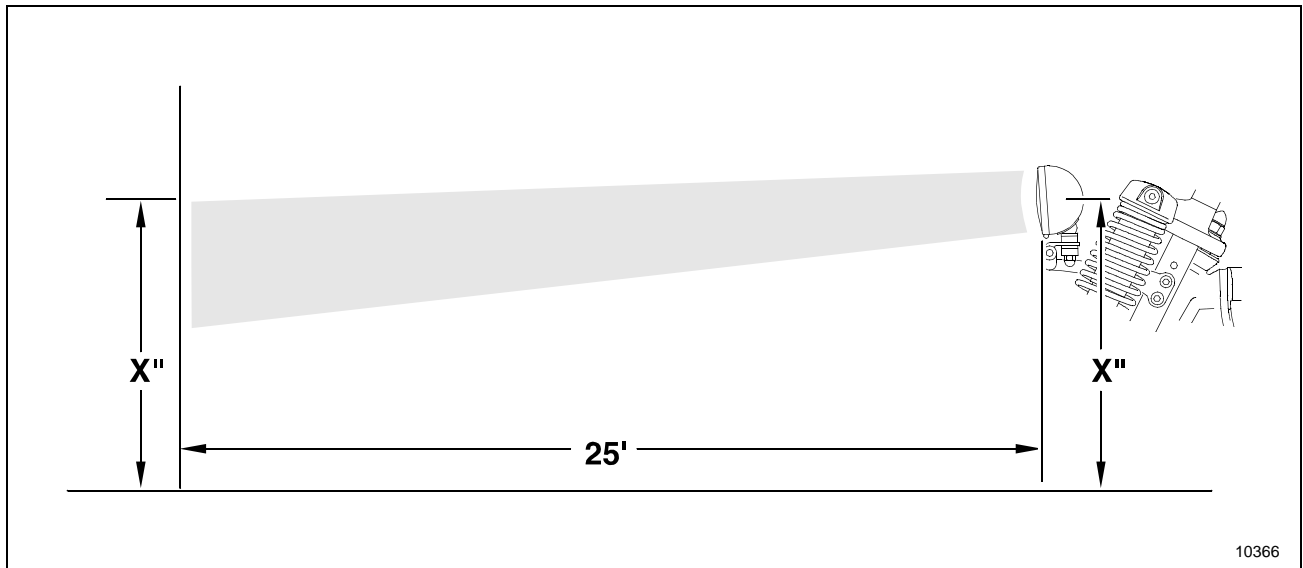


Figure 5

Safety

⚠ WARNING

Adding accessories and additional weight to the motorcycle can affect its stability, handling characteristics, and safe operating speed.

Be sure that the driving lamps are securely attached to the motorcycle before riding and

whenever you take a break while riding. If the driving lamps shift while you are riding, it can create a sudden imbalance that can cause you to lose control.

To maintain stability and balance:

- Do not attach additional weight to the driving lamps.

Bulb Replacement

Before replacing either driving lamp bulb:

- The bulbs should be cool to the touch
- The driving lamp switch should be off
- The motorcycle main switch should be off

1. Loosen the driving lamp bezel screw. While supporting the bulb, gently spread the bezel and remove it from the lamp body.
2. Disconnect the bulb wires.
3. Reverse this procedure to install a new bulb.



EXCELSIOR-HENDERSON MOTORCYCLE MANUFACTURING COMPANY

805 HANLON DRIVE · BELLE PLAINE, MINNESOTA 56011 · TELE: 612.873.7000/FAX: 612.873.7030 · www.excelsior-henderson.com

Excelsior-Henderson™, Super X™, Rider's Handbook™, and the X & Bar logo are registered trademarks of the Excelsior-Henderson Motorcycle Manufacturing Company. Loctite® is a registered trademark of the Loctite Corporation. Always ride safely, within the limits of the law, and your riding ability. Never ride under the influence of alcohol or drugs. Know your Excelsior-Henderson motorcycle and read your Rider's Handbook from cover to cover. We recommend you take a Motorcycle Safety Foundation Rider Education Course (for a course near you call 1.800.447.4700). We also recommend that you always wear a helmet, appropriate protective eyewear, and appropriate clothing, and that you insist your passenger does the same. However, we respect your right as an individual to make your own choice about the protective equipment you wear (within the limits of the law). Protect your privilege to ride by joining the American Motorcyclist Association.



Windshield Kit #6099-0025

Parts List

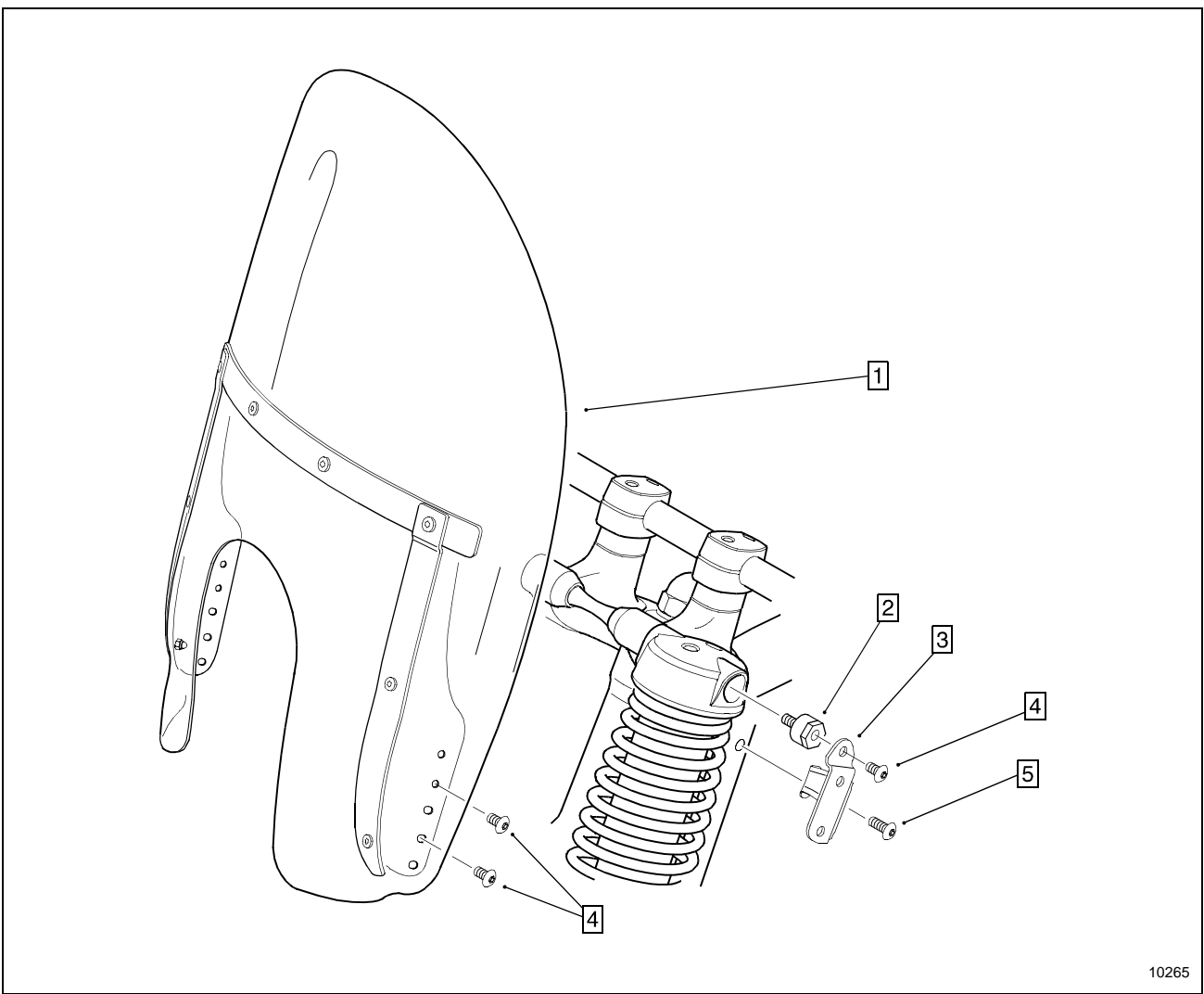


Figure 1

Item	Part No.	Description	Qty.	Item	Part No.	Description	Qty.
1.		Windshield Assembly**	1	4.	5199-0633	Screw - Hex. Button Hd. 5/8"	6
2.	7499-0017	Bracket Mounting Studs	2	5.	5199-0634	Screw - Hex. Button Hd. 7/8"	2
3.	7499-0009	Windshield Bracket - LH	1				
* 7499-0010		Windshield Bracket - RH	1				
		* Not Illustrated					
		** Not Sold Separately					

Installation Instructions

Please read the Safety information on the following page before using your windshield.

1. With a Torx wrench on each front strut axle screw, remove whichever screw loosens first. Push or pull the strut axle in the direction of the remaining screw about 1 inch, or until the wrench flats near the center of the strut axle are exposed, and remove the remaining screw (see Figure 2).

2. Apply a few drops of Loctite® 242 thread locker to the windshield bracket mounting studs and tighten them to the strut axle (see Figure 1).

Torque: 35 ft. lbs

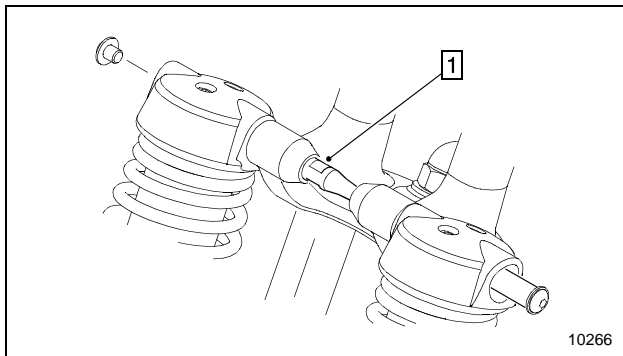


Figure 4

1. Wrench Flats Exposed

3. Remove the hole plugs from the upper mounting holes on each side of the rigid fork (see Figure 3). If necessary, clean any paint from the mounting holes with a 5/16"-18 tap.

4. Attach the windshield brackets to the mounting studs with two of the 5/8" hex. button hd. screws supplied with this kit. Attach the windshield brackets to the rigid fork with the two 7/8" hex. button hd. screws supplied with this kit (see Figure 3).

Torque: 17 ft. lbs.

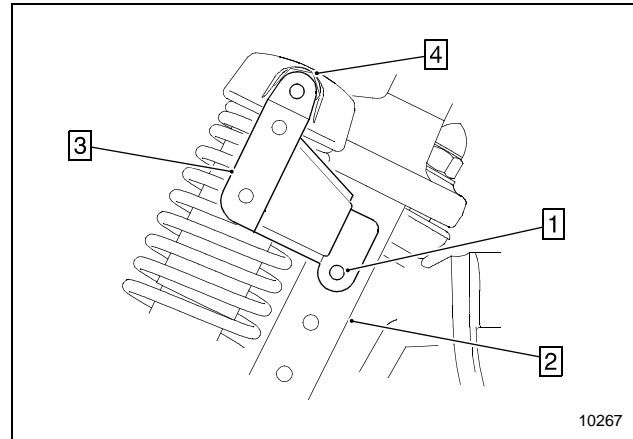


Figure 4

- 1. Mounting hole
- 2. Rigid Fork
- 3. Windshield Bracket
- 4. Mounting Stud

5. Determine the desired height of the windshield and attach it to the mounting brackets with the 4 remaining hex. button hd. screws supplied with this kit. The windshield may be tilted slightly forward or rearward to remove reflections or glare caused by highly polished or plated components.

Torque: 17 ft. lbs.

NOTICE

It is possible to install this windshield at 4 different heights. Select a height that allows you to easily look over the top of the windshield in the event the windshield suddenly becomes obstructed, preventing you from looking through it. Always install the windshield to the mounting brackets with 4 screws.

6. Adjust the amount of air gap between the top of the headlamp body and the windshield to approximately 1/4" by loosening the windshield pinch screws and moving the windshield insert. Tighten the pinch screws when finished (see Figure 4).

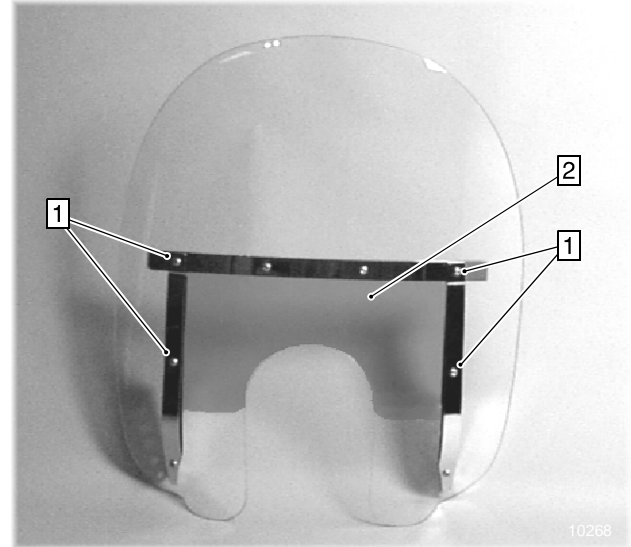


Figure 4

1. Windshield Pinch Screws
2. Windshield Insert

Safety

WARNING

Adding accessories and additional weight to the motorcycle can affect its stability, handling characteristics, and safe operating speed.

Be sure that the windshield is securely attached to the motorcycle before riding and whenever you take a break while riding. If the windshield shifts while you are riding, it can create a sudden imbalance that can cause you to lose control.

To maintain stability and balance:

- Do not attach additional weight to the windshield.

Windshield Care

Wash the windshield using a soft cloth or sponge soaked in a solution of mild detergent and warm water, applying minimal pressure as you wash. Let the detergent do the cleaning, not the pressure you apply. Excessive washing pressure may cause dirt, sand, or other foreign materials on the windshield to scratch it. Soak the cloth or sponge in the detergent and water solution frequently to provide plenty of soapy water for washing, and keep the cloth or sponge clean by rinsing it frequently.

Minor scratches may be removed with a quality plastic polishing compound. Follow the manufacturer's instructions when using plastic polishing compounds.

Oil, tar, and tree sap may also damage the motorcycle's finish. If normal washing does not remove these materials, you may need to use a special cleaner. Choose a cleaner designed for use on clear plastic and follow the manufacturer's instructions when using special cleaners.



EXCELSIOR-HENDERSON MOTORCYCLE MANUFACTURING COMPANY

805 HANLON DRIVE · BELLE PLAINE, MINNESOTA 56011 · TELE: 612.873.7000/FAX: 612.873.7030 · www.excelsior-henderson.com

Excelsior-Henderson™, Super X™, Rider's Handbook™, and the X & Bar logo are registered trademarks of the Excelsior-Henderson Motorcycle Manufacturing Company. Loctite® is a registered trademark of the Loctite Corporation. Always ride safely, within the limits of the law, and your riding ability. Never ride under the influence of alcohol or drugs. Know your Excelsior-Henderson motorcycle and read your Rider's Handbook from cover to cover. We recommend you take a Motorcycle Safety Foundation Rider Education Course (for a course near you call 1.800.447.4700). We also recommend that you always wear a helmet, appropriate protective eyewear, and appropriate clothing, and that you insist your passenger does the same. However, we respect your right as an individual to make your own choice about the protective equipment you wear (within the limits of the law). Protect your privilege to ride by joining the American Motorcyclist Association.